

OPEN IGLOO

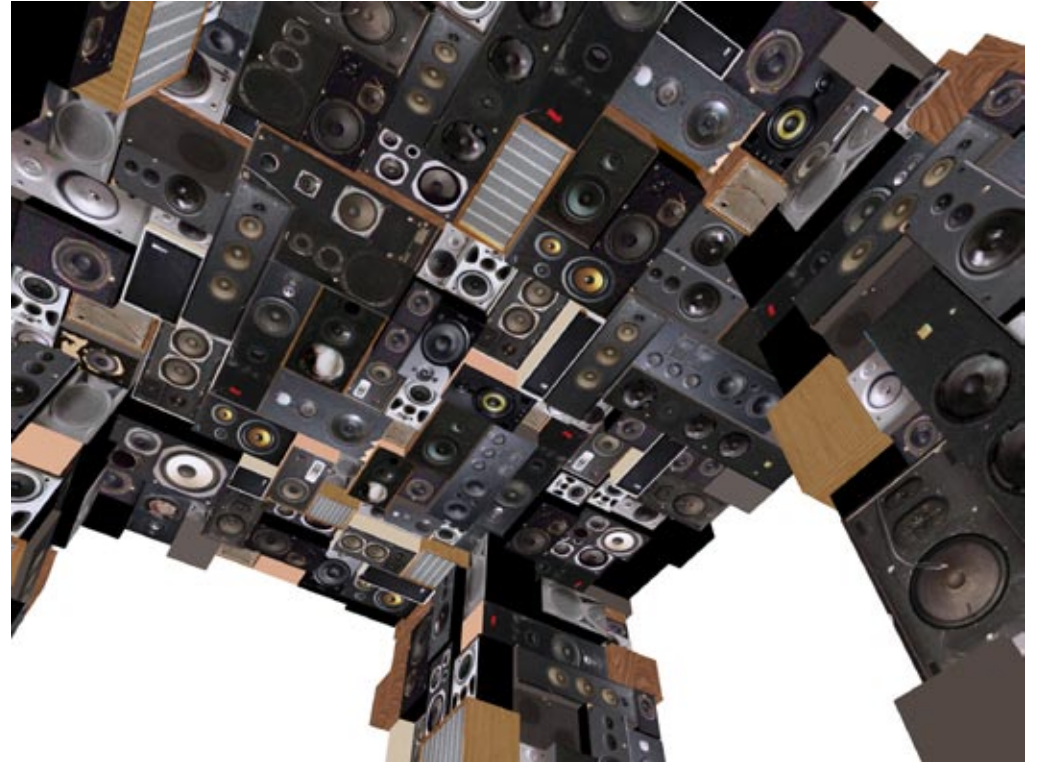
Benoît Maubrey



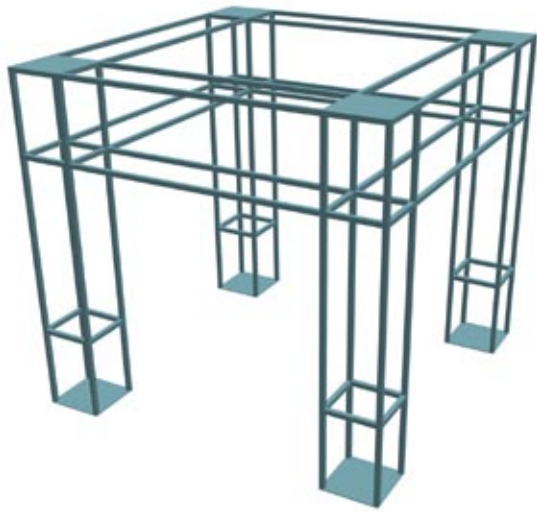
OPEN IGLOO
Benoit Maubrey



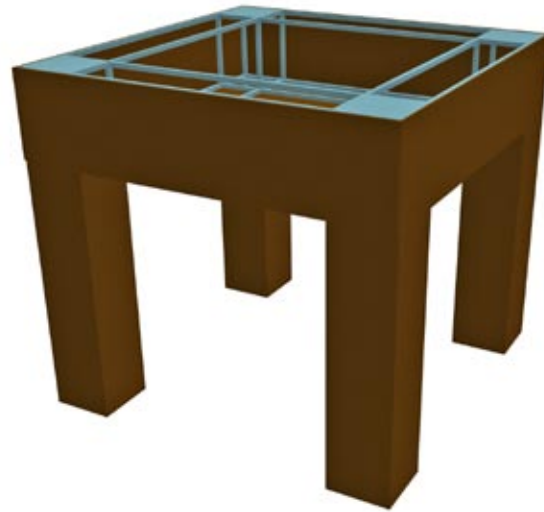
OPEN IGLOO
Benoit Maubrey



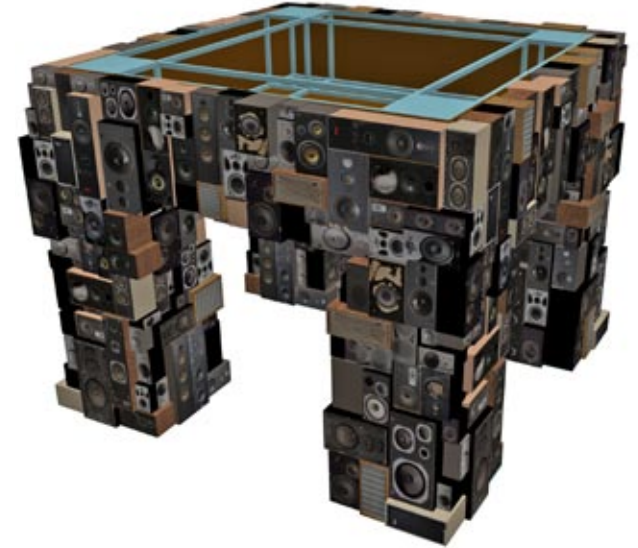
OPEN IGLOO
Benoit Maubrey



steel structure...

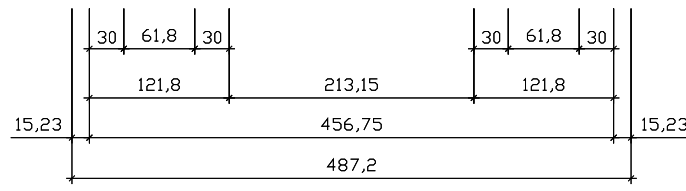
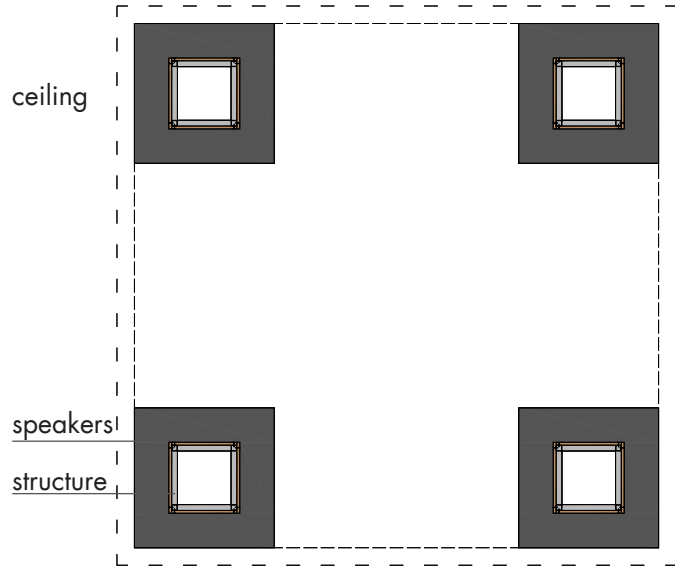


...covered with wooden board...



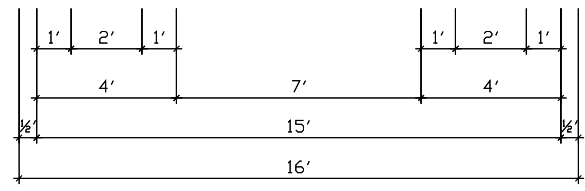
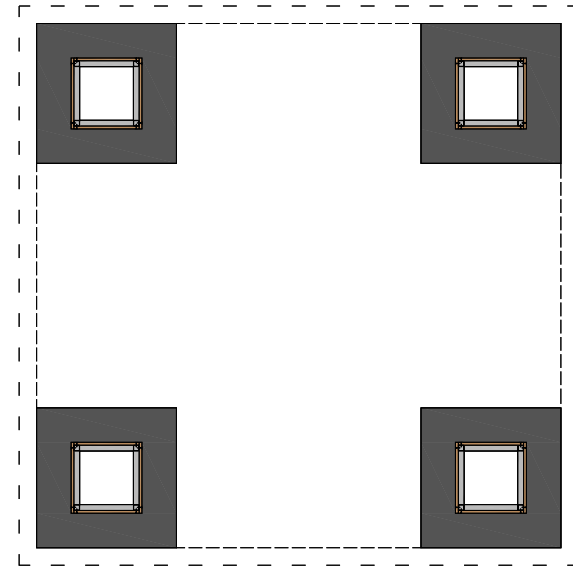
...and screwfixed speakers.

cm



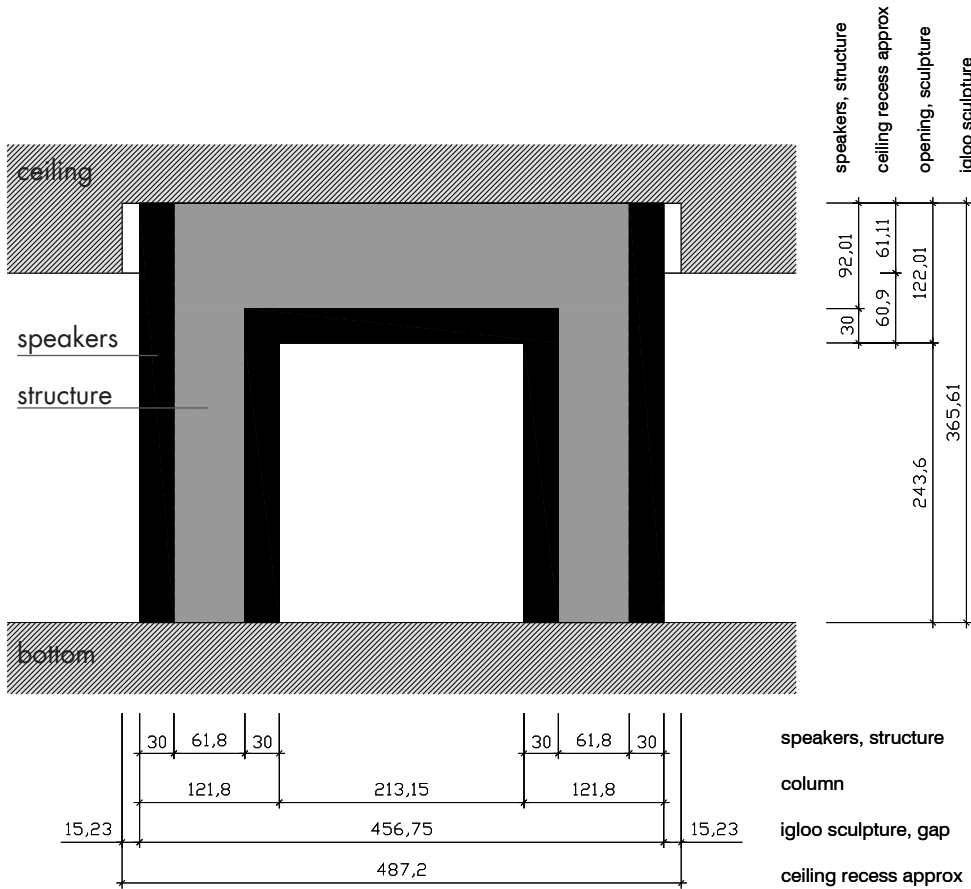
speakers, structure
 column
 igloo sculpture, gap
 ceiling recess approx

feet

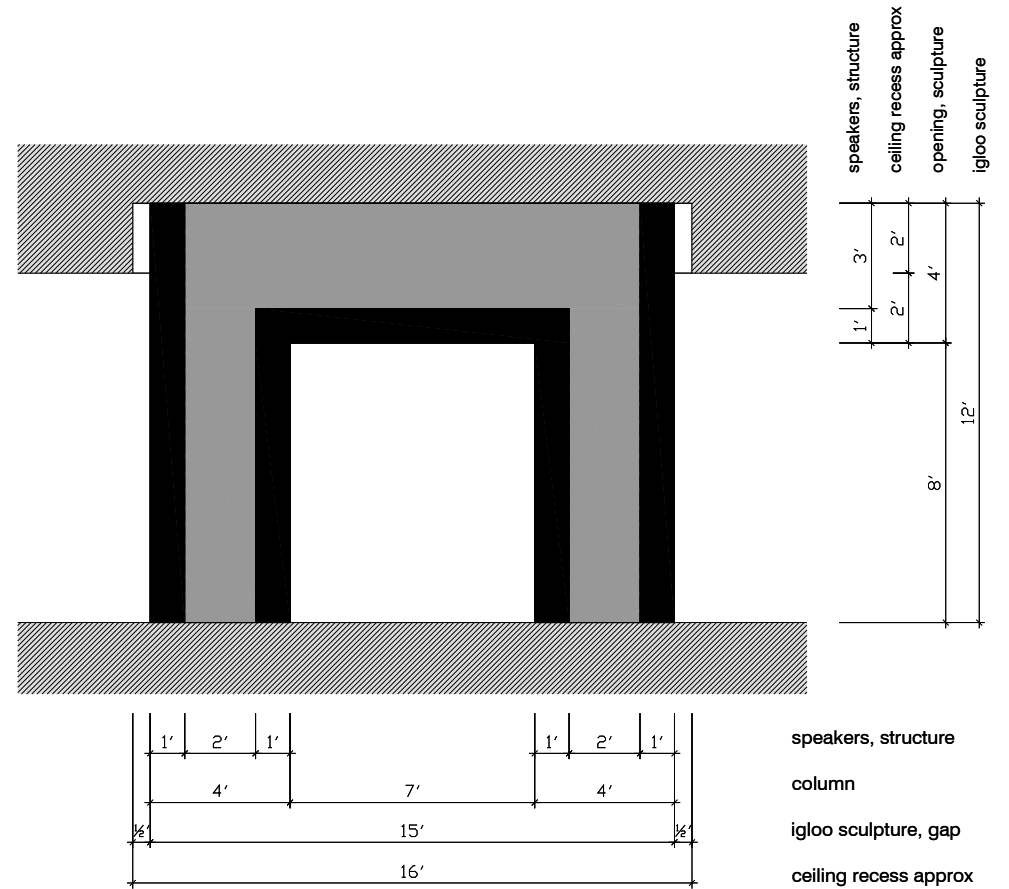


speakers, structure
 column
 igloo sculpture, gap
 ceiling recess approx

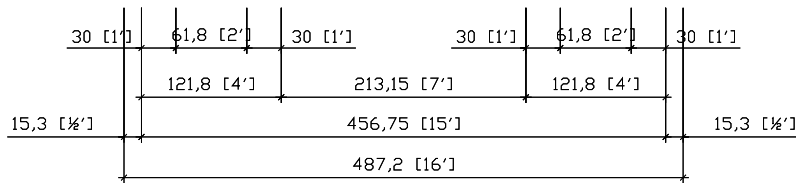
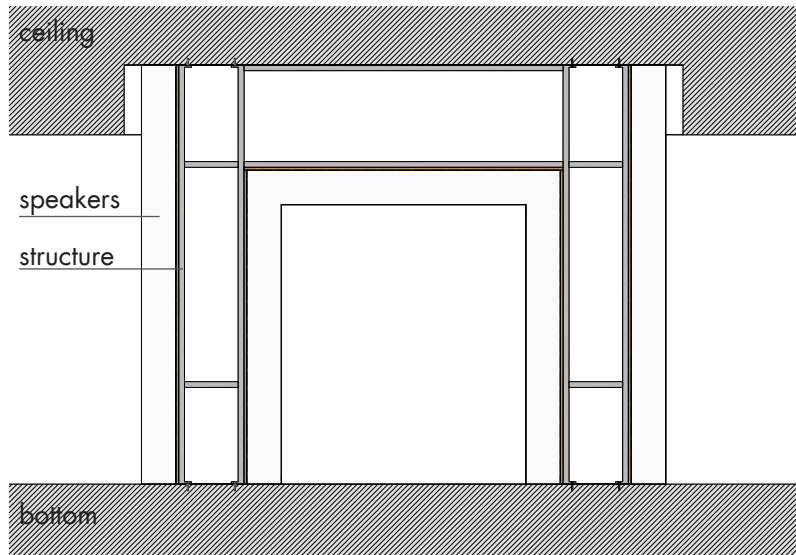
cm



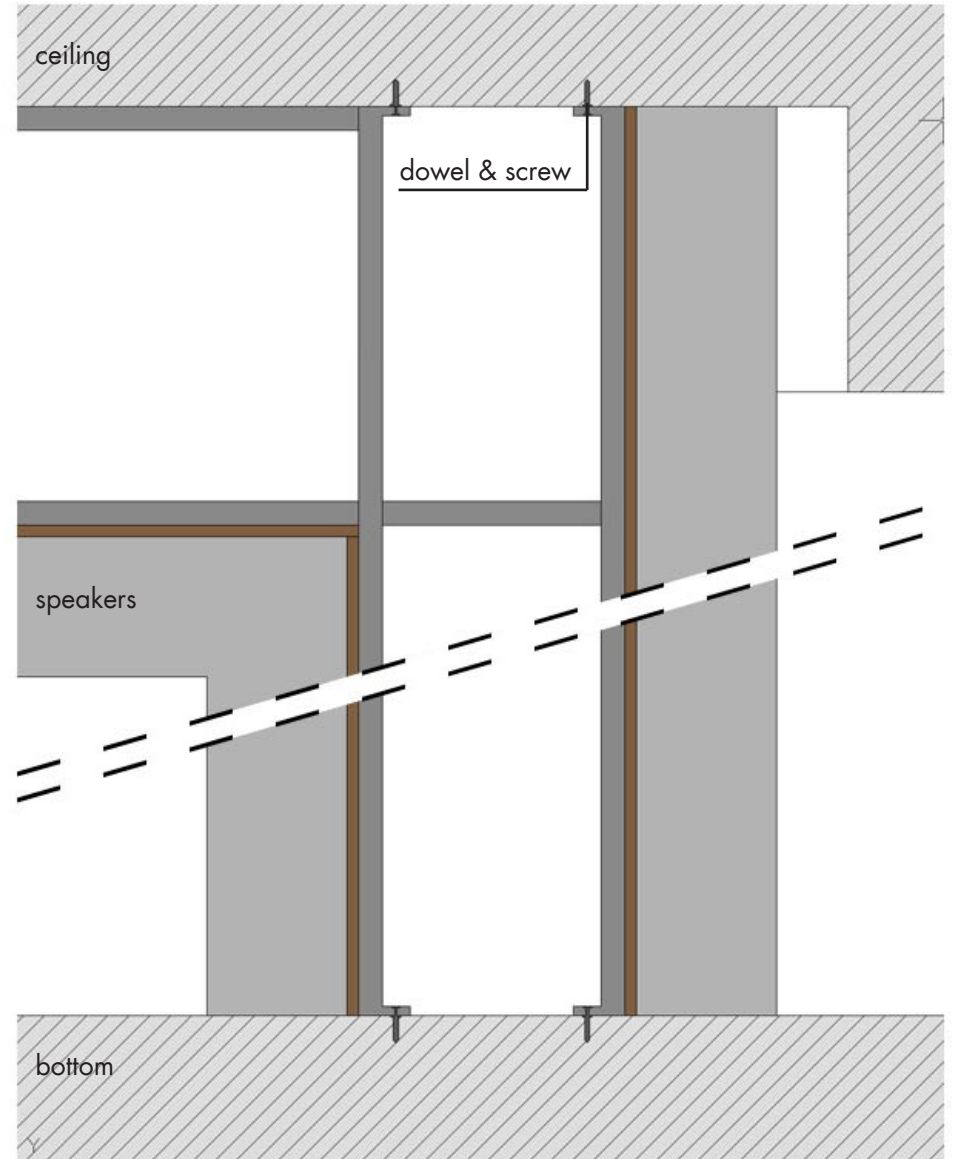
feet

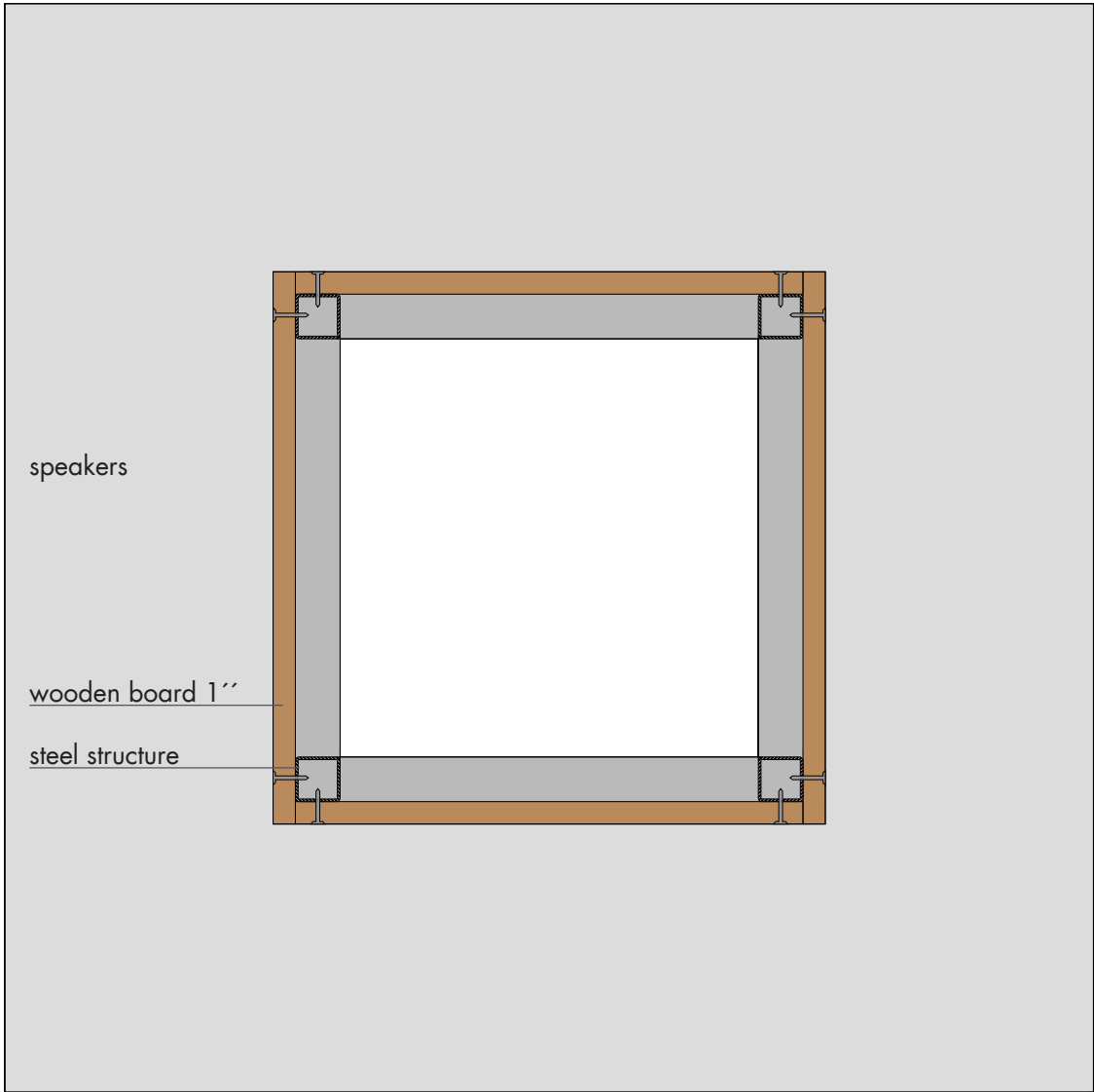


cm / feet



speakers, structure
column
igloo sculpture, gap
ceiling recess approx



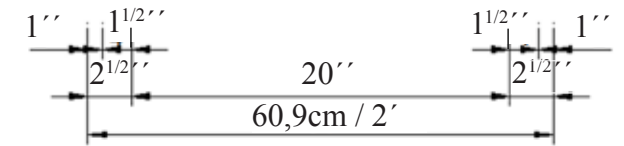
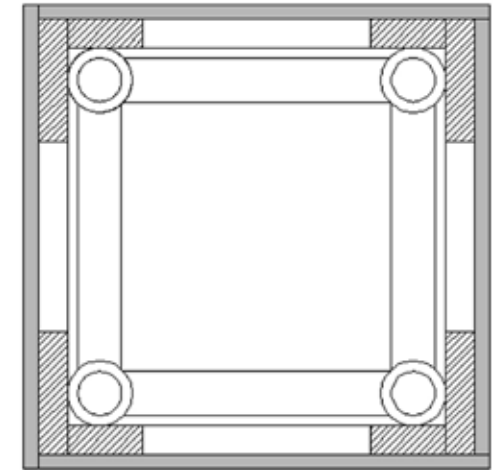
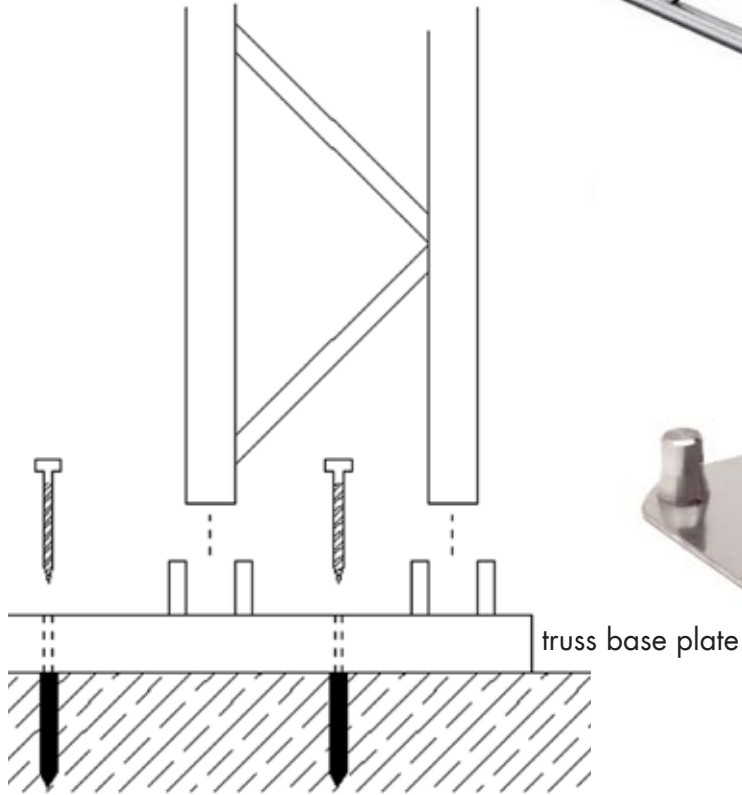
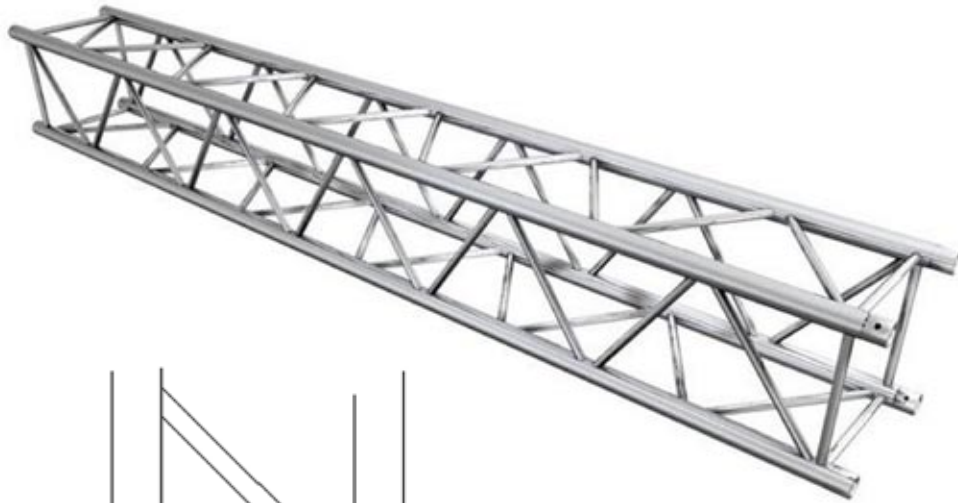


profile steel structure

50mm / 2"

- structure bracing via wooden boards

alternative structure via traverse / truss system



OPEN IGLOO

Benoît Maubrey

Baitzer Bahnhofstr.47
14822 Brück OT Baitz
Germany

tel: +49+33841-8265
fax +49+33841-33121
mobile +49-177 349 6354

e-mail: mail@benoitmaubrey.com
